

Deye Cloud App

Wi-Fi Configuration Operation Manual

NINGBO DEYE INVERTER TECHNOLOGY Co.,LTD

Add: No.26, YongJiang Road, Beilun, NingBo, 315806, China.

Customer Service E-mail: cloudservice@deye.com.cn

Method 1: Wi-Fi configuration under the plant page:

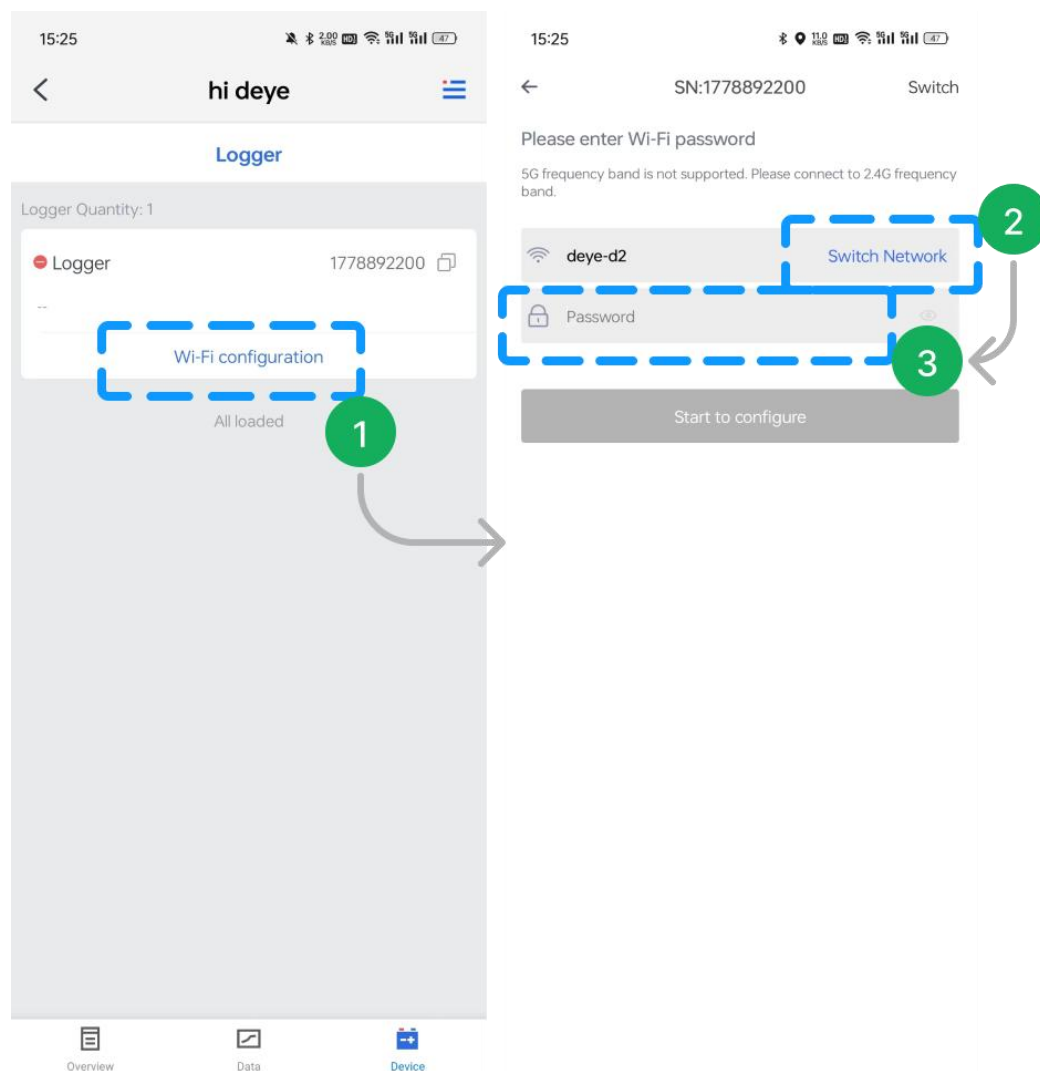
On the plant main page, click on the plant where the logger that needs to be connected to the network is located.

Step 1 Select Device-Logger and tap **【Wi-Fi configuration】** ;

Step 2 Jump to the Wi-Fi configuration page, APP will default to obtaining the present network connected with the phone.

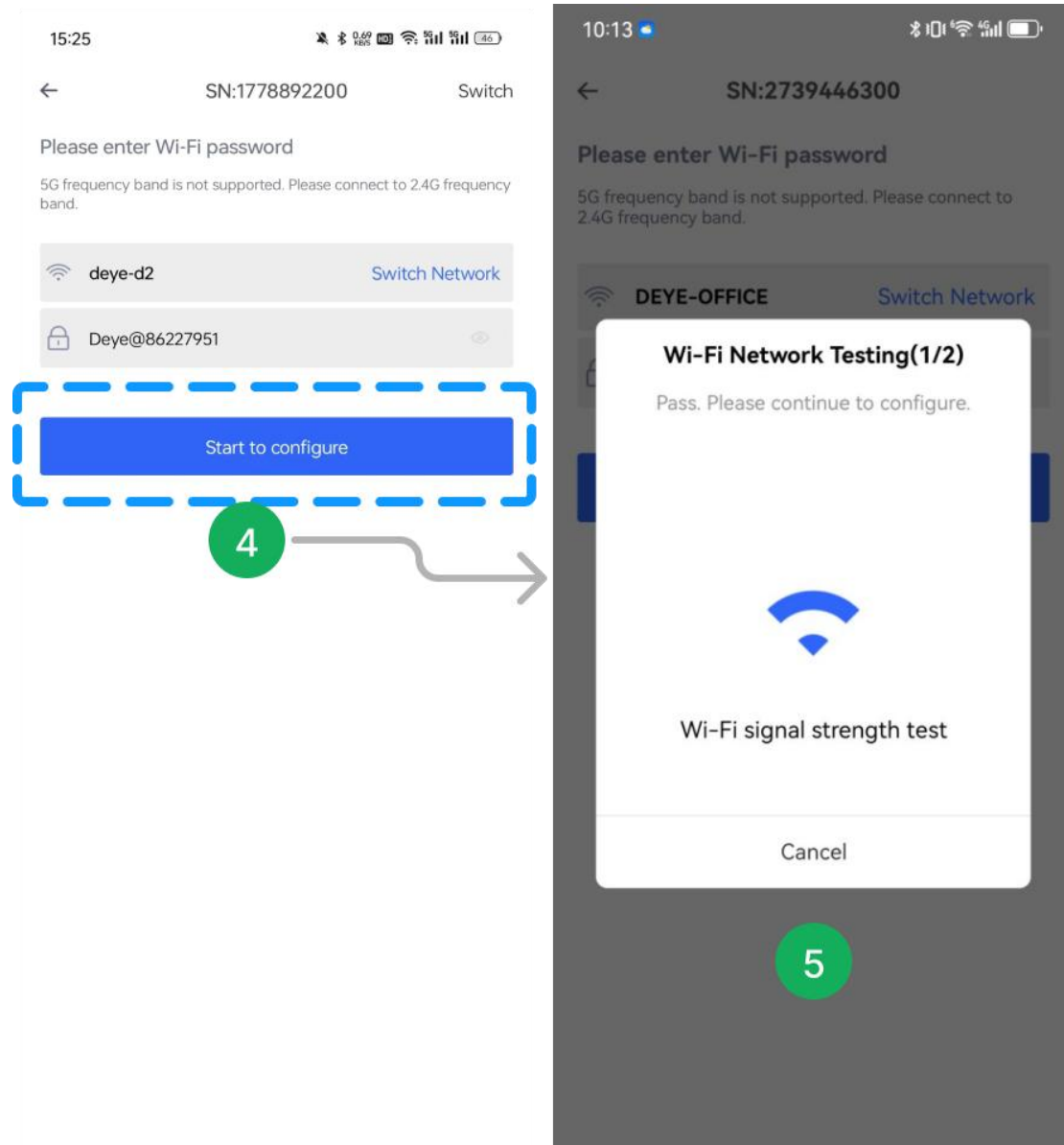
【Switch Network】 is optional and the other currently available wireless network could be switched manually;

Step 3 Enter the password for the WLAN;



Step 4 Tap **【Start to configure】** ;

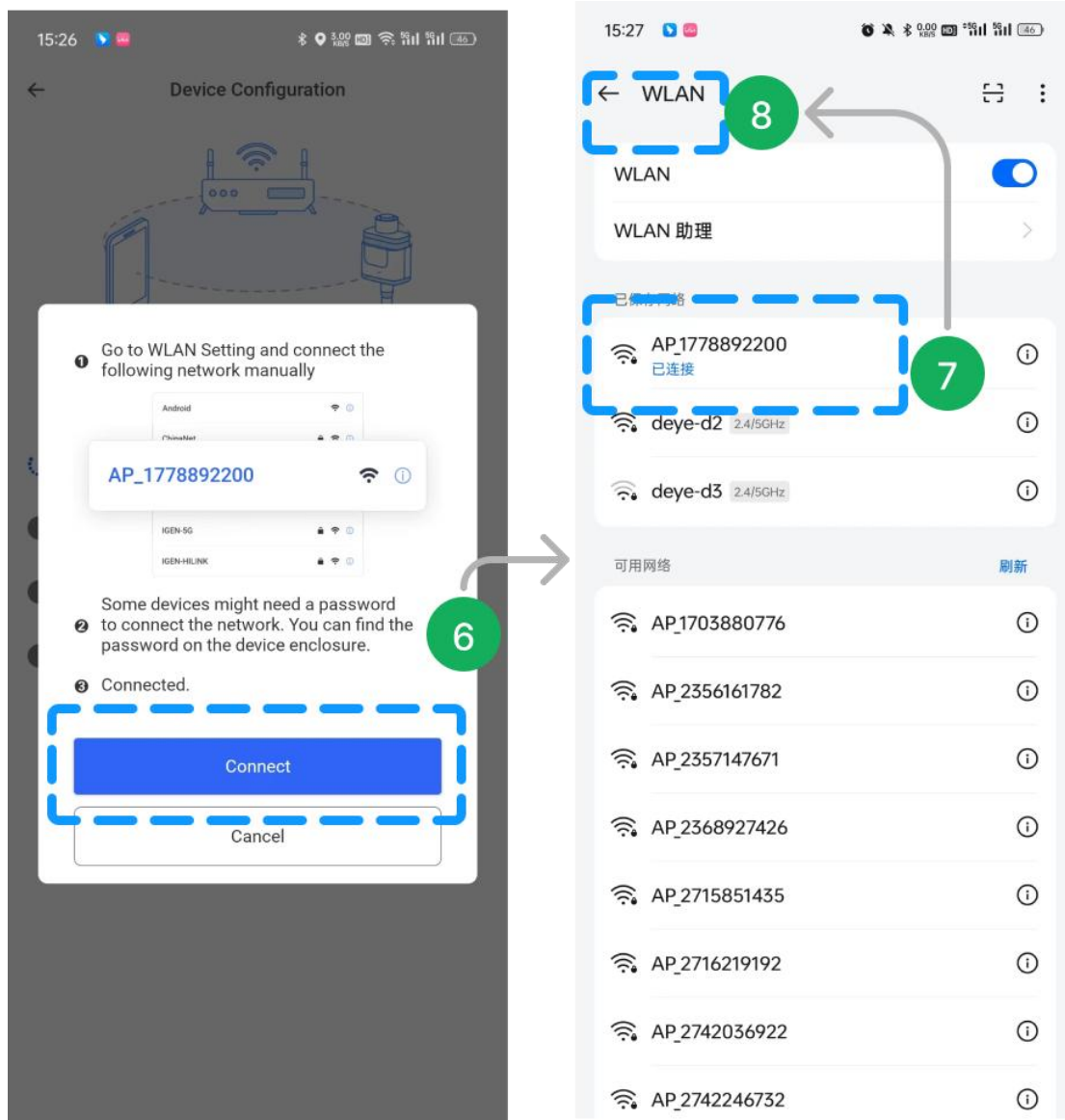
Step 5 Wi-Fi configuration being executed;



Step 6 Tap **【Connect】** to configure logger in the WLAN;

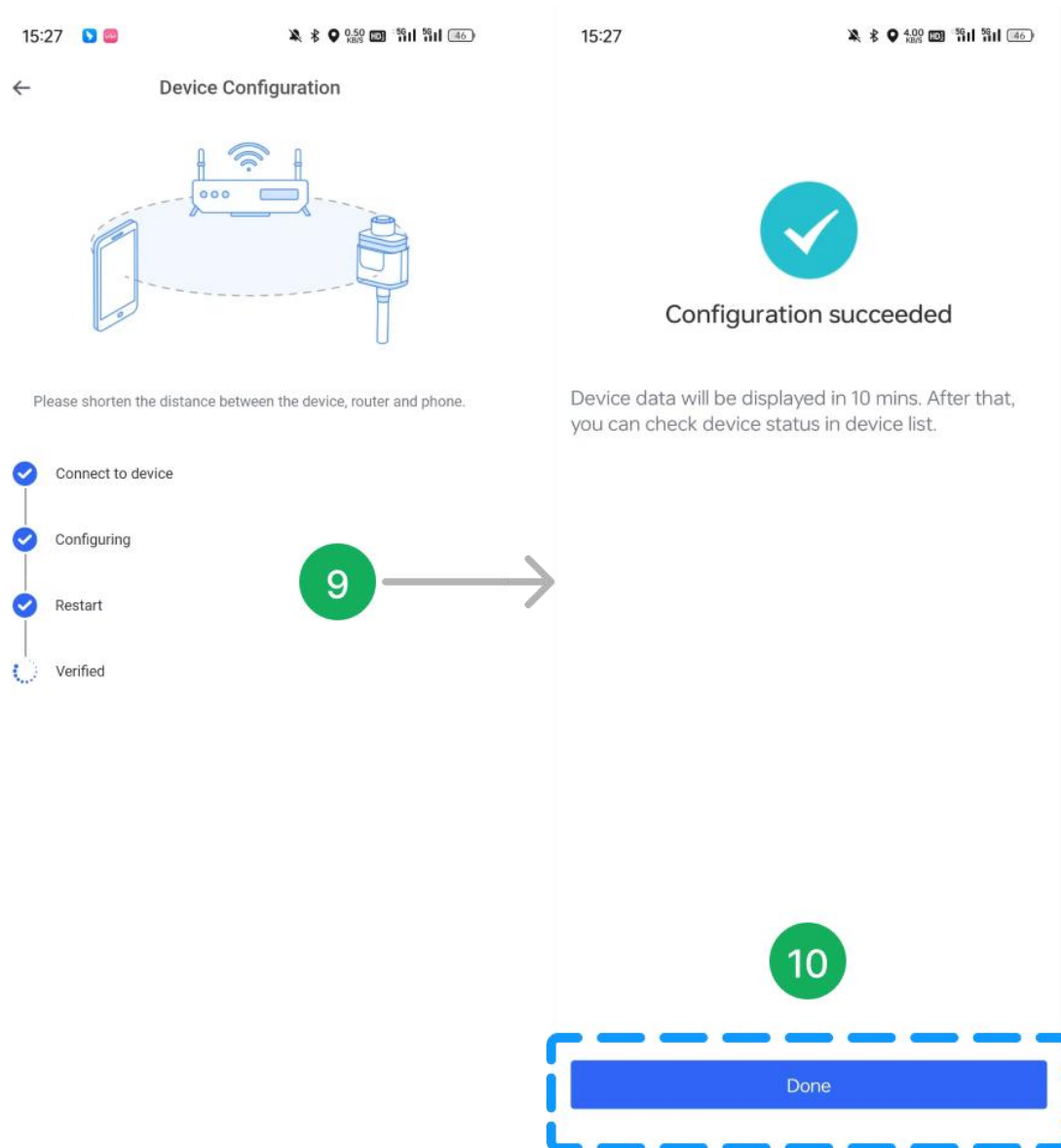
Step 7 Select the WLAN (AP+SN) prompted by the system and enter the password on the logger;

Step 8 Tap **【←】** and back to APP;



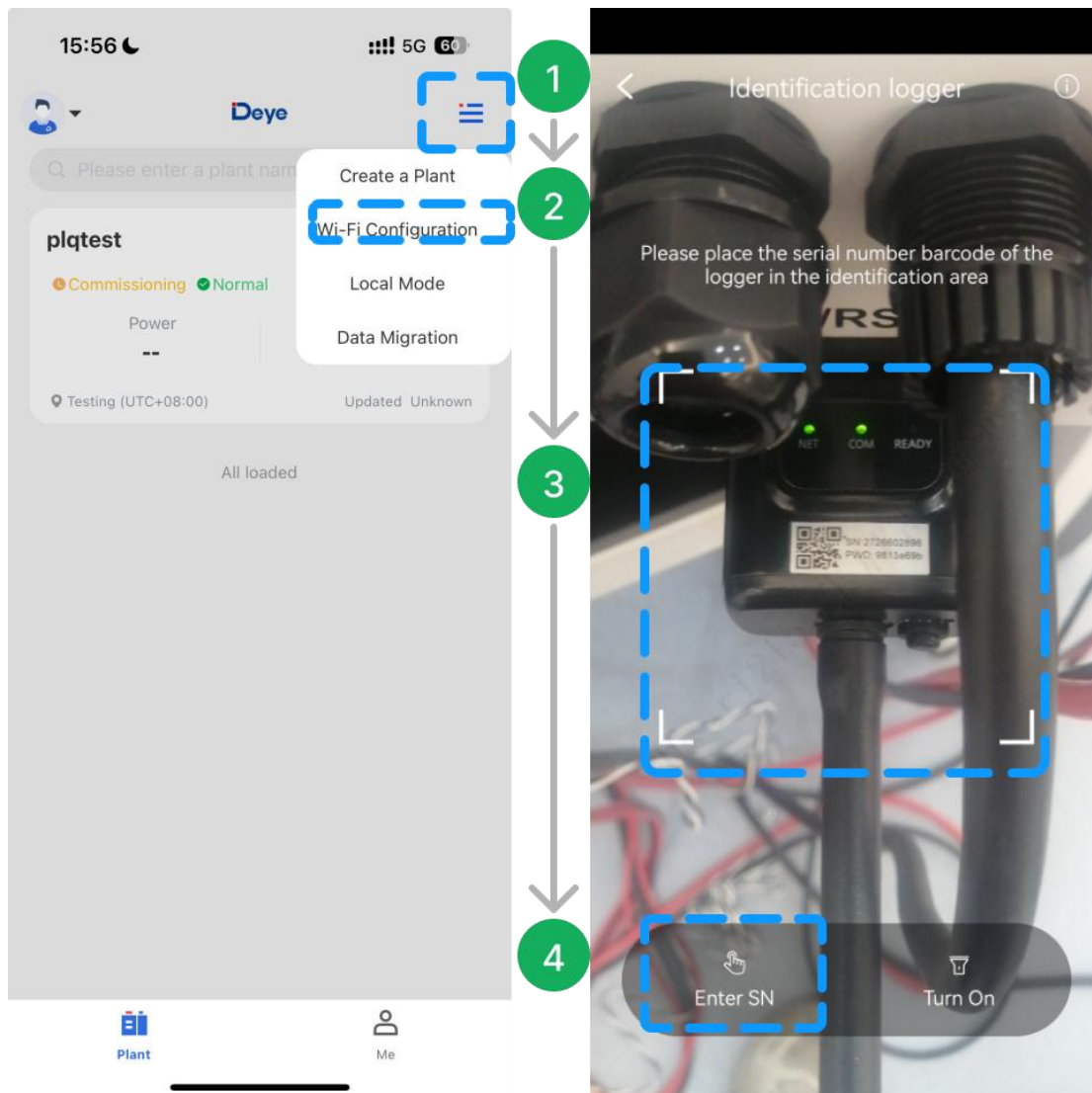
Step 9 Connect to device, Configuring, Restart and Verified are executed;

Step 10 After the page displaying “Configuration succeeded” , tap **【Done】** to close the page and back to the device list.



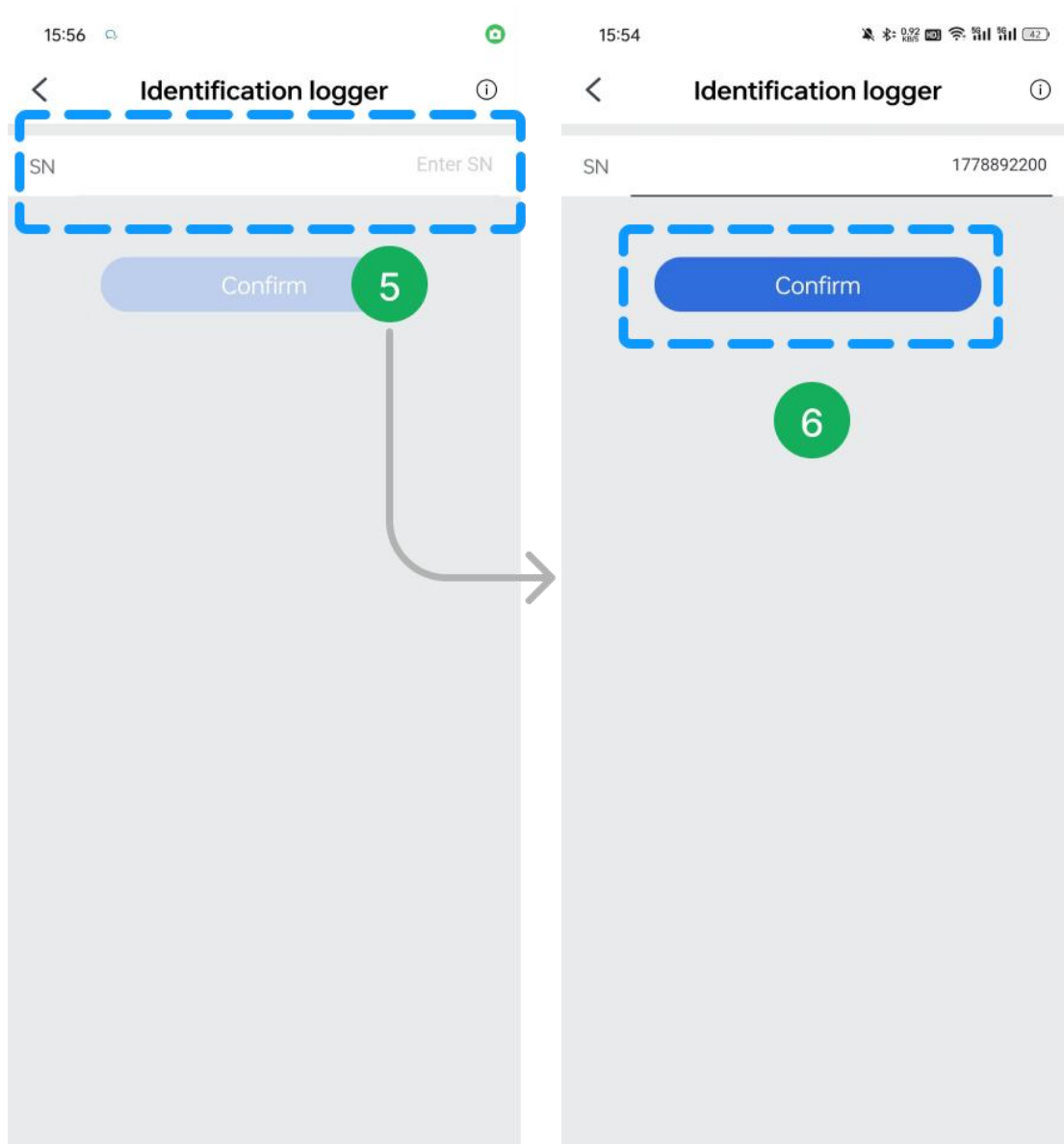
Method 2: Generic Wi-Fi configuration:

- Step 1 Tap on the top right corner of the plant list 【☰】 ;
- Step 2 Tap 【Wi-Fi Configuration】 ;
- Step 3 Scan the QR code on the logger;
- Step 4 In case the QR code is unavailable, Tap 【Enter SN】 ;



Step 5 Enter the logger SN;

Step 6 Tap **【Confirm】** , jumps to the Wi-Fi configuration page;

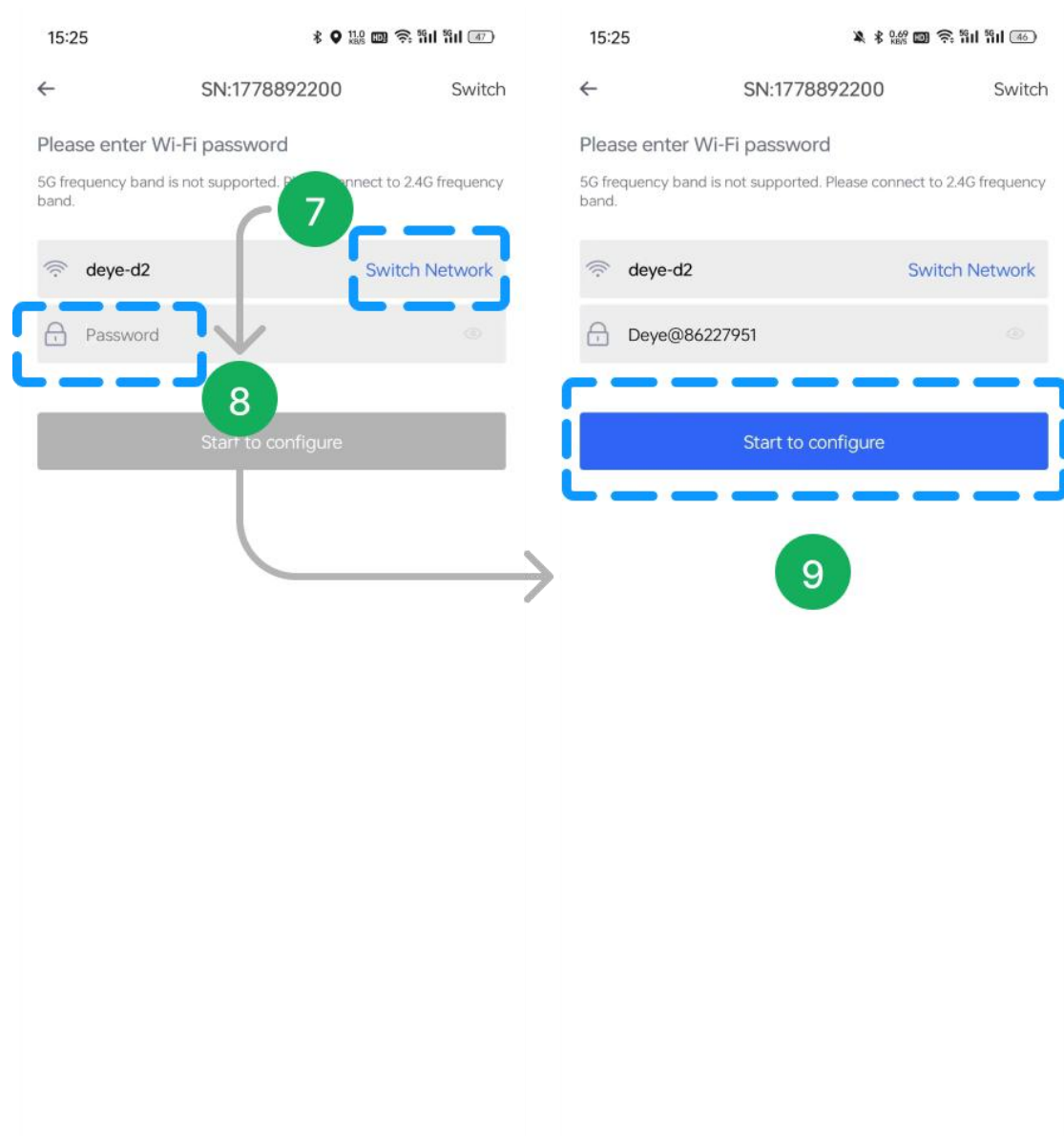


Step 7 Jump to the Wi-Fi configuration page, APP will default to obtaining the present network connected with the phone.

【Switch Network】 is optional and the new currently available wireless network could be entered manually;

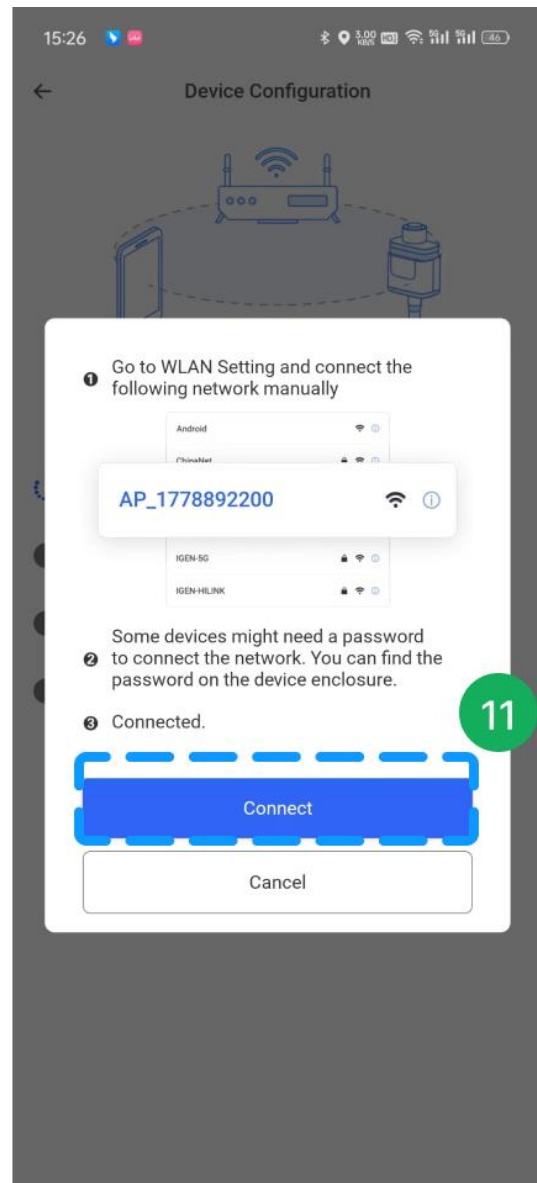
Step 8 Enter the password for the WLAN;

Step 9 Tap 【Start to configure】 ;



Step 10 Wi-Fi configuration being executed;

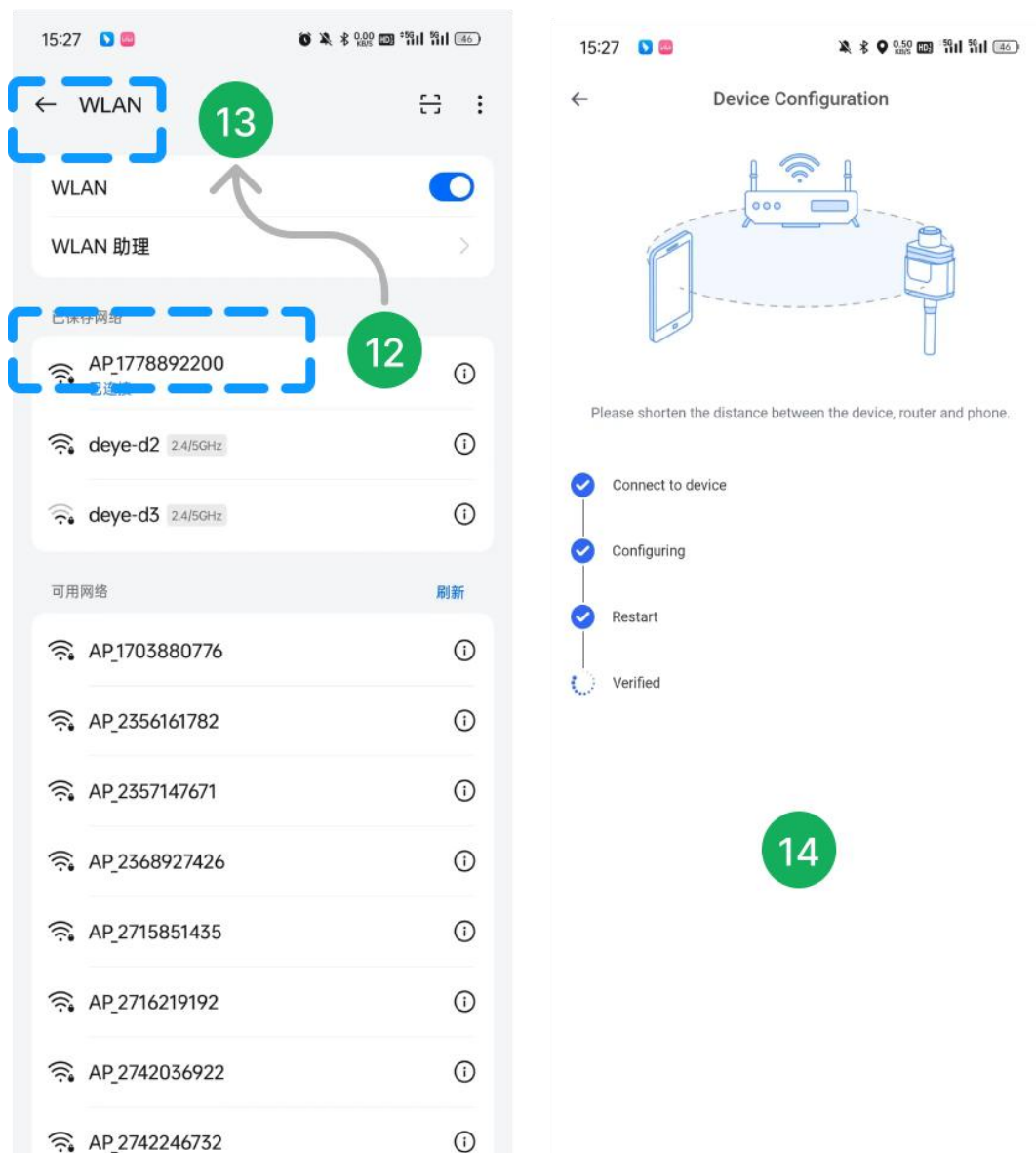
Step 11 Tap **【Connect】** to configure logger in the WLAN;



Step 12 Select the WLAN (AP+SN) prompted by the system and enter the password on the logger;

Step 13 Tap 【←】 and back to APP;

Step 14 Connect to device, Configuring, Restart and Verified are executed;



Step 15 After the page displaying “ Configuration succeeded ” , tap **【Done】** to close the page and back to the entering page of the logger.

